

SunSquare® canvas with Sattler 321 Panama



Sattler 321-010 white

(reinforcement) (border)



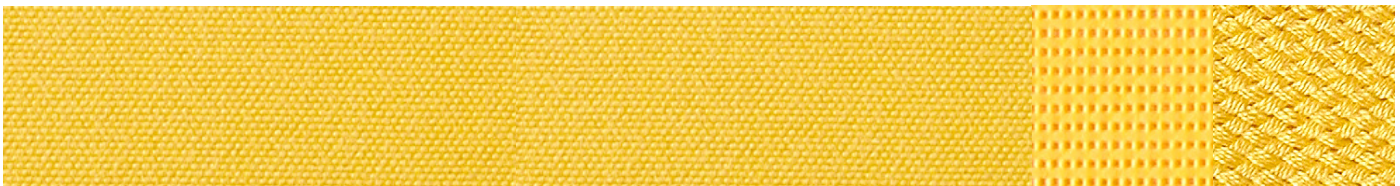
Sattler 321-325 sand

(reinforcement) (border)



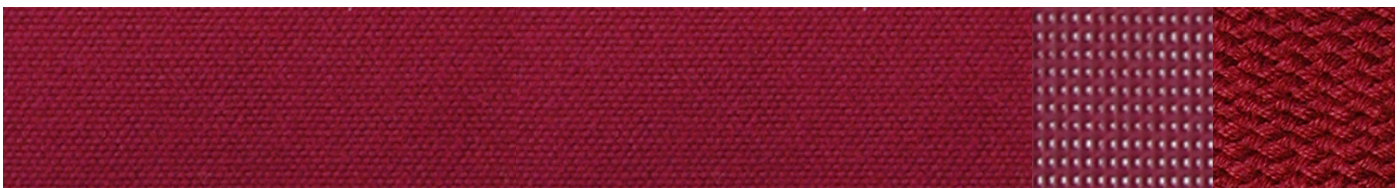
Sattler 321-030 light grey

(reinforcement) (border)



Sattler 321-003 yellow

(reinforcement) (border)



Sattler 321-763 bordeaux red

(reinforcement) (border)



Sattler 321-006 marine blue

(reinforcement) (border)



Sattler 321-004 green

(reinforcement) (border)

Technical Specifications

Sattler 321

Norm

Material, fabric	Acrylic- awning fabric	DIN 60 001
Yarn density (warp / weft)	appr. 34 / 23 threads/cm	DIN EN 1049-2
Weight	370g/m ²	DIN EN 12127
Weave	P 2 / 2	DIN ISO 9354
Max. tensile strength (warp / weft)	170 / 150 daN/5cm	DIN EN ISO 13934-1
Tear strength	5/5 daN	DIN EN ISO 13934-1
Max tensile strength elongation (warp / weft)	35% / 30%	DIN EN ISO 13934-1
Oil- resistance	class 5	AATCC 118
Water resistance	460 mm water column	EN 20 811
Resistance to penetration by water („through test“)	75mm / 48 hours o.k.	
Light fastness	min. level 7 (weiß: min. 5)	DIN EN ISO 105-B02

Miscellaneous

Fabric Coatings	<ul style="list-style-type: none"> - against algae and mildew affection - waterrepellant (TEXgard®) - oil- and fat repellent - equipped with fungicide - highly light resistant - UV resistant - UV- cover Standard 801
Maintenance and Cleaning	Tear coating provides the fabric with excellent waterrepellent features. This protection is designed to overcome even multiple winding cycles of the awning. Please unroll the sail as often as possible for drying.
Cleaning Instruction	<p>Fat- and oil spots can be removed easily with petroleum ether and sucked up with a dry, absorbant cloth. Tab off all kinds of fluids from the hydrophobic fabric surface, remove loose dirt periodically using soft brush or / and water hosepipe (NEVER use high pressure cleaner!).</p> <p>If basic cleaning is necessary, please use soft brush or sponge with a mild detergent / water dilution (approx. 2%, we recommend: „ADAMOL Quickreiniger“ which we have in stock) followed by a rich rinsing with clear water to remove any rests of detergent.</p>